

FaceDeep 3

Smart Face Recognition Terminal



Wi-Fi



Battery



Cloud

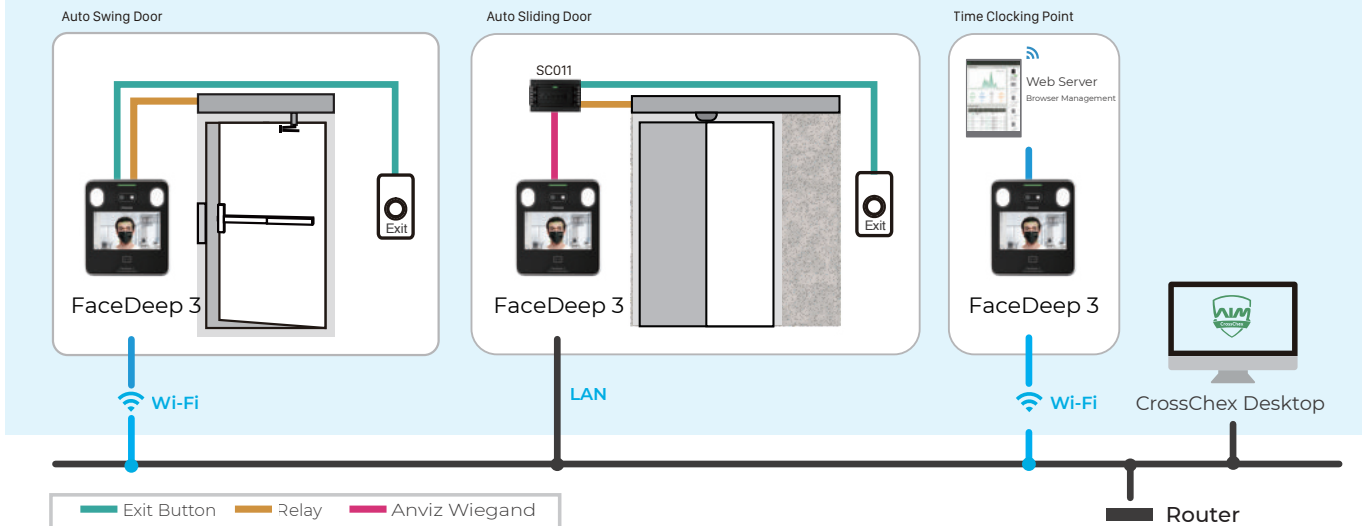


- New generation touchless solution for the people to access control on the entrance or record time attendance and simultaneously check mask-wearing without having to touch a terminal or gate.
- Built-in IR and visual cameras integrated with Anviz's unique BioNANO[®] algorithm to produce the best in class live face recognition performance
- Register up to 6,000 users for dynamic face authentication
- Recognition distance up to 1.5 M with matching speed < 0.5s by 1: 6,000.
- Optional battery backup, specifically designed to work consistently in unstable power supply environments, such as Construction sites, Manufacturing, Schools and buildings in countryside, etc.

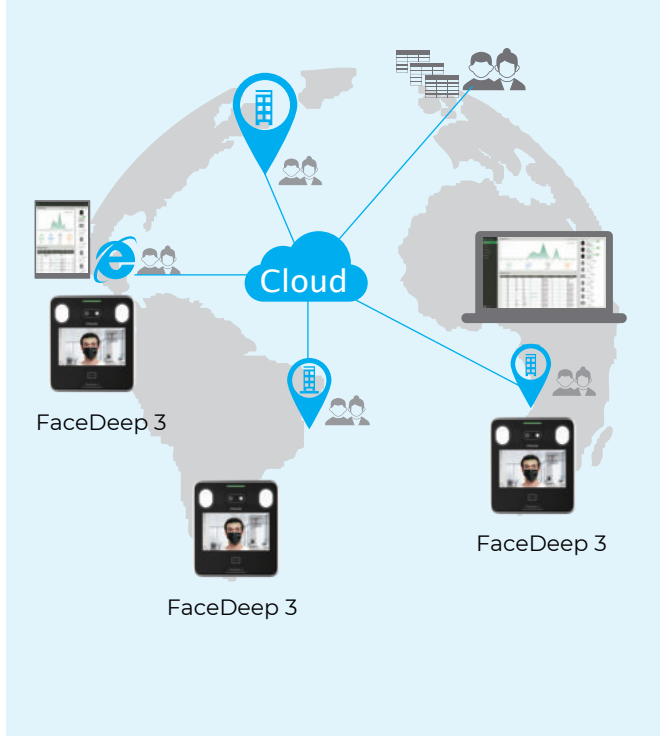
FaceDeep 3

Smart Face Recognition Terminal

Local Deployment (Crosschex Standard)



Cloud Deployment (Crosschex Cloud)



Key Specifications

Max. Users	6,000
Max. Cards	6,000
Max. Logs	100,000
Communication	Standard: TCP/IP, RS485, Optional: Wi-Fi
Identification Mode	Face, Password, RFID Card
Identification Distance	0.3~1.5 M
Identification Speed	<0.5s
RFID Card	Standard: 125 KHz EM, Optional: 13.56 MHz: MiFARE, DESFire
CPU	Linux Based 1Ghz CPU with Enhanced AI Computing Power
Temperature Range	-10 °C (14 °F)- 50 °C (122 °F)
Humidity	20% to 90%
Power	Standard: DC12V 3A * Optional: Lithium Battery, 2600mah, Rechargeable, Supported with standby for 10 hours

ANVIZ
POWERING A SMARTER WORLD

Anviz Global Inc.

41656 Christy Street Fremont, Fremont, CA, 94538

Tel: 1-510-573-6552 | Toll-free: 1-855-268-4948 | sales@anziv.com | www.anziv.com

©2020 Anviz Global Inc. Anviz and identifying product names and numbers herein are registered trademarks of Anviz Global Inc. All non-Anviz brands and product names are trademarks or registered trademarks of their respective companies. Product appearance, build status and/or specifications are subject to change without notice.